

# 產品目錄

## Product Catalogue



## SELLEYS犀利牌品牌簡介 Profile of SELLEYS

SELLEYS 犀利牌由德裔移民馬丁·犀利先生於1939年在澳洲創立，迄立至今已有80多年歷史。早在1959年，犀利牌已擁有許多廣受歡迎的產品。

從60至90年代，犀利牌推出了眾多家喻戶曉的產品，如犀利牌液體釘及犀利牌彈性填縫劑。直至現在，犀利牌的產品已擴闊至建築黏合劑、填縫劑及密封膠、自助維修及家居清潔等多個不同的種類。

在香港，犀利牌的主打產品液體釘已改變了香港建築輔料市場的施工及使用習慣。而自助維修站產品系列更成功打入大型家品連鎖店市場，為家居提供創新維修方案，輕鬆解決日常生活問題。

犀利牌始終堅持「顧客滿意度第一」的宗旨，時刻關注國際動向，追求品質與性能的卓越，為消費者提供一流的產品。

Created by a German immigrant Martin Selley in Australia in 1939, SELLEYS is a brand with a story over 80 years. Back in 1959, SELLEYS developed a series of popular products.

From 60's to 90's, SELLEYS has continued to grow strongly, and launched a series of products which later became household names, such as SELLEYS LIQUID NAILS and SELLEYS NO MORE GAPS. Today, SELLEYS product portfolio including Construction Adhesives, Fillers and Sealants, Repair and Fix, and Household Cleaning.

In Hong Kong, SELLEYS' key product LIQUID NAILS has changed the habits of Hong Kong construction materials market. Repair & Fix series also get into the chain stores of household market, to provide creative repair method for people to fix their problems easily.

SELLEYS will always adopt 'customer satisfaction' as a key philosophy with ongoing commitment to keep close attention to international trends, pursue superb quality and excellent performance, in order to serve our customers with world-class products.

# 目錄

## Table of Contents

### 1. 建築膠合劑 Construction Adhesives

1.1	犀利牌液體釘升級配方 Liquid Nails Upgraded Formula	1
1.2	犀利牌速乾液體釘 Liquid Nails Rapid Cure	3
1.3	犀利牌快黏液體釘 Liquid Nails Fast	5
1.4	犀利牌專易寶建築強力粘接劑 Professional Construction Adhesive	7

### 2. 填縫劑及密封膠 Fillers & Sealants

2.1	犀利牌彈性填縫劑 No More Gaps Multipurpose Gap Filler	9
2.2	犀利牌中性玻璃膠 Neutral Silicone Sealant	11
2.3	犀利牌防霉浴室玻璃膠 Wet Area	13
2.4	犀利牌暴封膠 STORM™ Sealant	15
2.5	犀利牌水中補 MarineFlex™	17

### 3. 自助維修站 Repair & Fix

3.1	犀利牌塑膠專用強力膠 Power Grip All Plastics	19
3.2	犀利牌特快強力膠 Supa Glue	20
3.3	犀利牌可調整超能膠 Supa Glue Strong & Adjustable	21
3.4	犀利牌耐撞擊超能膠 Supa Glue Shock Proof	22
3.5	犀利牌快補膠 (補鞋膠) Kwik Grip (Shoe Adhesive)	23
3.6	犀利牌快補膠 (透明配方) Kwik Grip Crystal Clear	24
3.7	犀利牌透明快乾AB膠 Epoxy Fix Super Fast	25
3.8	犀利牌金屬快乾AB膠 Epoxy Fix Super Steel	26
3.9	犀利牌暴封膠 STORM™ Sealant	27
3.10	犀利牌防霉中性玻璃膠 Wet Area	29
3.11	犀利牌多用途透明玻璃膠 Silicone Sealant Clear	31
3.12	犀利牌彈性填縫劑 No More Gaps Multipurpose Gap Filler	33
3.13	犀利牌液體釘升級配方 Liquid Nails Upgraded Formula	35
3.14	犀利牌多用途塑鋼土 Knead-It Multipurpose	37
3.15	犀利牌水中補塑鋼土 Knead-It Underwater	38
3.16	犀利牌木料填充劑 Plastic Wood	39

### 4. 家居清潔 Home Cleaning

4.1	犀利牌萬能抹潔布 (兩片裝) Super Cloth Twin Pack	40
-----	--------------------------------------	----

### 5. 多功能保養 Multi-Use Product

5.1	犀利牌 RP7 隔水防銹潤滑劑 RP7 Multipurpose Lubricant	41
-----	--	----

## 犀利牌液體釘升級配方 Liquid Nails Upgraded Formula



負重力高  
High strength



可黏合大部份物料  
Bond most of materials surfaces



耐候性強  
Weather resistant



### 產品說明 Description

犀利牌液體釘是由合成橡膠構成的溶劑型極強黏力多用途建築膠黏劑，能對大多數建築材料提供持久穩定的黏接力。

Liquid Nails is a premium grade, solvent based, synthetic rubber multipurpose construction adhesive that delivers a consistently strong and lasting bond on most building substrates.

### 用途 Uses

適用於 Ideal for :

- 不能施釘的地方  
Areas where nailing is not desirable
- 地板安裝  
Sheet flooring to joists
- 門檻及門框鑲嵌  
Door strips and frame panelling
- 牆身鑲嵌  
Wall panelling
- 黏接無縫地板  
Bonding seamless
- 地腳線及天花線安裝  
Skirting boards and cornices installation

### 適用於 Suitable For

- |                        |                             |                         |
|------------------------|-----------------------------|-------------------------|
| • 木材<br>Timber         | • 石材<br>Masonry             | • 橡膠<br>Rubber          |
| • 石膏板<br>Plasterboard  | • 混凝土<br>Concrete           | • 玻璃<br>Glass           |
| • 中纖板<br>MDF           | • 金屬<br>Metals              | • 塑膠*<br>Most plastics* |
| • 刨花板<br>Particleboard | • 瓷磚及陶瓷<br>Tiles & Ceramics |                         |

### 技術特性 Technical Features

- 提供足夠柔韌性，令黏接部位更牢固持久  
Delivers response flexibility so your bond stays stronger and longer
- 優異的耐水及耐候性，適用於室內和室外  
Excellent resistance to water and weather makes it suitable for interior and exterior applications
- 施工簡易、在冬季低溫下亦能輕易擠出  
Easy to extrude even at low winter temperatures
- 能連接及黏合表面不平的物料  
Bridges gaps and will adhere materials with uneven surfaces
- 快速定位、迅速固化  
Fast grab and rapid cure
- 不滴流、不塌陷  
Does not drip, sag or string
- 可填補寬度為9毫米以內的縫隙  
Bridges gap up to 9mm
- 乾後可上漆  
Paintable when dry

## 施工貼士 Application Tips

- \*黏接前請預先測試  
\*Pre-test to determine compatibility
- 不適用於黏貼鏡子及緊密夾持的接合處  
Not suitable for use on mirrors and tightly clamped joints
- 高溫下黏接強度會減弱(高於50°C)。避免黏接陽光直射的金屬或較重的材料  
Bonds weaken at high temperatures (above 50°C). Avoid bonding metals or heavy materials which will be heated by direct sun
- 被黏接的材料不宜長期置於潮濕處  
Not suitable for bonding materials should not be store in constantly damp or wet areas
- 黏接發泡膠建議使用犀利牌快黏液體釘  
For polystyrene foam applications Liquid Nails Fast is recommended

## 技術參數 Technical Details & Performance

性能 Property	典型值 Typical Result
VOC含量 VOC Content	<70g/L
垂流 Slump	<6 mm
覆蓋面積 Coverage	每360克的紙管可擠出直徑為5毫米、長約15米的膠條 Each 360g cartridge will yield approx 15 meters of 5mm bead

## 黏接強度對應時間 Bond Strength Time

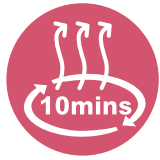
所需的時間取決於應用環境

Time for strong bond depends on nature and condition of application

施工 Application	20分鐘 20 minutes	24小時 24 hours	7天 7 Days
	可重新定位 Can be reposition	初始黏合 Initial Bond	強力黏接 Strong Bond
			最佳黏接效果 Best Bonding Strength

產品 Product	包裝 Packing	顏色 Colour	產品編號 Product Code
犀利牌液體釘升級配方 Liquid Nails Upgraded Formula	360g	啡色 Brown	119667-360G
		白色 White	000067-360G

## 犀利牌速乾液體釘 Liquid Nails Rapid Cure



**10分鐘即穩固貼妥\***  
Cure in just 10 minutes\*



**適用於任何物料**  
Suitable for all materials surfaces



**防水**  
(達BS-EN204-D4標準)  
**Waterproof**  
(Meets BS-EN204-D4)



### 產品說明 Description

犀利牌速乾液體釘是性能優越、高表現性的聚氨酯建築黏合劑，10分鐘即穩固貼妥\*。速乾液體釘於各液體釘系列中提供高終極黏合強度，而且持久耐用、防水，亦能黏合兩個非滲透性表面，適用於任何物料#。

Liquid Nails Rapid Cure is an advanced, high performance polyurethane construction adhesive that cures in just 10 minutes\*. It provides the high ultimate strength in the Liquid Nails range. It is a durable, waterproof bond even when bonding two non porous surfaces. It bonds most building substrates#.

### 用途 Uses

適用於 Ideal for :

- 地板安裝  
Sheet flooring to joints
- 金屬門檻及門框鑲嵌  
Metal door strips and frame panelling
- 需於戶外施工的地方，如夾板  
Exterior applications such as decking
- 陽光直接照射的金屬  
Applications where metal substrates are exposed to direct sunlight
- 對溶劑型黏合劑有化學反應的塑膠  
Plastic substrates which are sensitive to solvent based adhesives are used
- 使用溶劑型黏合劑時會較慢固化的金屬  
Metal installations in which solvent based adhesives will be slow to cure
- 需額外防水措施的地方  
Extra water resistance
- 長期處於潮濕的位置  
Constantly damp or wet areas

### 技術特性 Technical Features

- 極快黏合 - 10分鐘即黏合多孔滲透性物料  
Rapid cure - cure in 10minutes for porous materials
- 高終極黏合強度  
High Ultimate strength
- 耐候及防水性特強 (達BS-EN204-D4標準) - 適合黏接長時間與水接觸的位置  
Weather resistant and waterproof - suitable for areas contact with water
- 能連接及黏合表面不平的物料  
Bridges gaps and will adhere materials with uneven surfaces
- 不滴流、不塌陷  
Does not drip, sag or string
- 可填補寬度為3毫米或以內的裂縫  
Bridges gaps up to 3mm
- 乾後可上漆  
Paintable when dry

### 適用於 Suitable For

- |                       |                            |                |
|-----------------------|----------------------------|----------------|
| • 木材<br>Timber        | • 石材<br>Masonry            | • 橡膠<br>Rubber |
| • 石膏板<br>Plasterboard | • 混凝土<br>Concrete          | • 中纖板<br>MDF   |
| • 瓷磚<br>Tiles         | • 塑膠<br>Plastic            | • 金屬<br>Metals |
| • 纖維板<br>Masonite     | • 輕有機溶劑<br>防腐劑處理松木<br>LOSP | • 玻璃<br>Glass  |

## 施工貼士 Application Tips

- \*此時間只適用於黏合多孔性物料上，在過於乾燥的木材、大型物件及低滲透性表面或較低溫的情況下施工，或需較長時間乾固。於施工表面噴上一層薄霧水可加快乾固。  
Expect longer dry times for very 'dry' timber, heavier objects and less porous surfaces, or in cold weather. Spraying surfaces with a very light mist of water may help to speed cure.
- 速乾液體釘於固化時會輕微膨脹  
Product expands slightly as it cures

## 技術參數 Technical Details & Performance

性能 Property	典型值 Typical Result
VOC含量 VOC Content	<70g/L
垂流 Slump	<6 mm

## 黏接強度對應時間 Bond Strength Time

所需的時間取決於應用環境

Time for strong bond depends on nature and condition of application

施工 Application	5分鐘 5 minutes	10分鐘 10 mins	24小時 24 hours
	可重新定位 Can be reposition	初始黏合 Initial Cure	最佳黏接效果 Best Bonding Strength

產品 Product	包裝 Packing	顏色 Colour	產品編號 Product Code
犀利牌速乾液體釘 Liquid Nails Rapid Cure	325g	半透明 Translucent	125033-325G

## 犀利牌快黏液體釘 Liquid Nails Fast Grab



水性環保、低VOC  
Water based &  
Low VOC



不侵蝕油漆，不滲色  
No damage to  
paint surface &  
No bleeding



即時快黏#  
Fast grab#



### 產品說明 Description

犀利牌快黏液體釘是黏接力極強的水性環保淨味建築膠黏劑，能即時黏接#多孔滲透性物料。乾後牢固持久、不侵蝕油漆、不滲色。

Liquid Nails Fast is a water-based high strength construction adhesive with fast grab and low odour. It delivers a strong and lasting bond, no attack on lacquer and no bleeding when dry. #It's ideal for adhering timbers and other porous construction materials.

### 用途 Uses

適用於 Ideal for :

- 不能施釘的地方  
Areas where nailing is not desirable
- 牆身鑲嵌  
Wall panelling
- 黏接發泡膠板塊  
Bonding polystyrene foam panels and blocks
- 施工後需上油漆的位置  
Application on where paint is required
- 地腳線及天花線安裝  
Skirting boards and cornices installation

### 適用於 Suitable For

- |                        |                                |                              |
|------------------------|--------------------------------|------------------------------|
| • 木材<br>Timber         | • 石材<br>Masonry                | • 橡膠<br>Rubber               |
| • 石膏板<br>Plasterboard  | • 混凝土<br>Concrete              | • 玻璃<br>Glass                |
| • 中纖板<br>MDF           | • 瓷磚及陶瓷<br>Tiles &<br>Ceramics | • 塑膠*<br>Most plastics*      |
| • 刨花板<br>Particleboard | • 金屬<br>Metals                 | • 發泡膠<br>Polystyrene<br>foam |

### 技術特性 Technical Features

- 高耐熱性 - 陽光直接照射下不會失去黏合力  
High heat resistance - will not lose bonds exposed to sun
- 無溶劑熏煙 - 適用於大型室內工程  
No solvent fumes - ideal for large indoor jobs
- 任何溫度下均容易施工  
Easy to extrude at all temperatures
- 能連接及黏合表面不平的物料  
Bridges gaps and will adhere materials with uneven surfaces
- 未乾固時可重新定位  
Repositionable when wet
- 快速黏合# - 即時黏合力強，能減少在垂直表面黏合時的滑動  
Fast grab - high initial holding minimises slippage when adhering on vertical surfaces
- 不滴流、不塌陷  
Does not drip, sag or shrink
- 容易清潔 - 可用濕布輕易抹去過剩及溢出的液體  
Low mess - excess and squeeze out is easily cleaned up with wet cloth
- 乾後可上漆  
Paintable when dry

**施工貼士** Application Tips

- \*黏接前請預先測試  
\*Pre-test to determine compatibility
- 不防水。用於戶外時，請保護施膠點免受漏水影響  
Bonds are not water resistant. Protect bonds from water penetration if used in exterior applications
- 不適用於黏貼鏡子  
Not suitable for use on mirrors
- 不推薦使用在已打鐵釘的位置  
Not recommend for areas that nailed

**技術參數** Technical Details & Performance

性能 Property	典型值 Typical Result
VOC含量 VOC Content	<25g/L
垂流 Slump	0 mm
覆蓋面積 Coverage	每420克的支管可擠出直徑為5毫米，長約15米的膠條 Each 420g cartridge will yield approx. 15 meters of 5mm bead

**黏接強度對應時間** Bond Strength Time

所需的時間取決於應用環境

Time for strong bond depends on nature and condition of application

滲透性物料：

Porous materials:

施工 Application	24小時 24 hours	7天 7 Days
可重新定位 Can be reposition	最佳黏接效果 Best Bonding Strength	
即時快黏 Fast Grab	良好黏接 Good Bond	

於寒冷或潮濕的天氣黏合非滲透性物料，乾燥時間會大幅延長。

In cold or damp weather and between non-porous materials, drying time is greatly extended.

產品 Product	包裝 Packing	顏色 Colour	產品編號 Product Code
犀利牌快黏液體釘 Liquid Nails Fast Grab	420g	淺杏色 Beige	110701-420G

## 犀利牌專易寶建築強力粘接劑 Professional Construction Adhesive



**快乾**  
Fast cure



**優異垂直施工性**  
Excellent  
vertical application



**適合工程使用**  
Ideal for  
architectural use



### 產品說明 Description

犀利牌專易寶建築強力粘接劑是由聚合物組成的溶劑型建築膠黏劑。它可以跟大部分建材相容並形成強力黏接。

Professional Construction Adhesive is polymer compounding solvent-based construction adhesive. It is compatible with and bond strongly to most construction materials.

### 用途 Uses

- 適用於 Ideal for :
- 不能施釘的地方  
Areas where nailing is not desirable
  - 地板安裝  
Sheet flooring to joists
  - 門檻及門框鑲嵌  
Door strips and frame panelling
  - 牆身鑲嵌  
Wall panelling
  - 黏接無縫地板  
Bonding seamless floor
  - 地腳線及天花線安裝  
Skirting boards and cornices installation

### 技術特性 Technical Features

- 優異的垂直施工性  
Excellent vertical application property
- 可黏接大部分建材  
Bonds to most of the construction materials
- 能連接及黏合表面不平的物料  
Bridges gaps and will adhere materials with uneven surfaces
- 快速固化、黏接强度高  
Fast cure, great bonding strength
- 乾後可上漆  
Paintable when dry

### 適用於 Suitable For

- |                         |                        |
|-------------------------|------------------------|
| • 木材<br>Timber          | • 石材<br>Masonry        |
| • 混凝土<br>Concrete       | • 玻璃<br>Glass          |
| • 磚塊<br>Brick           | • 陶瓷<br>Ceramics       |
| • 塑膠*<br>Most plastics* | • 刨花板<br>Particleboard |
| • 纖維板<br>Fibreboard     | • 鋁材<br>Aluminium      |
| • 水泥板<br>Cement board   | • 層壓板<br>Plyboard      |

## 施工貼士 Application Tips

- \*黏接前請預先測試  
\*Pre-test to determine compatibility
- 不適用於黏貼鏡子及緊密夾持的接合處  
Not suitable for use on mirrors and tightly clamped joints
- 高溫下黏接強度會減弱（高於50℃）。  
避免黏接陽光直射的金屬或較重的材料  
Bonds weaken at high temperatures (above 50℃).  
Avoid bonding metals or heavy materials which will be heated by direct sun
- 被黏接的材料不宜長期置於潮濕處  
Not suitable for bonding materials in areas which will be constantly damp or wet

## 技術參數 Technical Details & Performance

性能 Property	典型值 Typical Result
VOC含量 VOC Content	<70g/L
垂流 Slump	<6 mm
覆蓋面積 Coverage	每350克的紙管可擠出直徑為6毫米、長約13米的膠條 Each 350g cartridge will yield approx. 13 meters of 6mm bead

## 黏接強度對應時間 Bond Strength Time

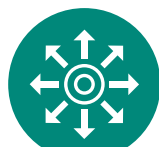
所需的時間取決於應用環境

Time for strong bond depends on nature and condition of application

施工 Application	15分鐘 15 minutes	24小時 24 hours	7天 7 Days
可重新定位 Can be reposition	初始黏合 Initial Bond	初始乾固 Initial Dry	最佳黏接效果 Best Bonding Strength

產品 Product	包裝 Packing	顏色 Colour	產品編號 Product Code
犀利牌專易寶建築強力粘接劑 Professional Construction Adhesive	350g	米色 Cream	000074-350G

## 犀利牌彈性填縫劑 No More Gaps Multipurpose Gap Filler



**超強彈性**  
Flexible



**可上漆**  
Paintable



**耐候性強**  
Weather resistant



### 產品說明 Description

犀利牌彈性填縫劑是可上漆及具彈性的阿加力填縫劑，可應用於室內及室外。  
Selley's No More Gaps series is a paintable, flexible acrylic gap sealant, suitable for interior and exterior applications.

### 用途 Uses

- 適用於 Ideal for :
- 填補門窗框架與牆壁之間的縫隙  
Filling joints between door or window frame and wall
  - 密封地腳線邊沿  
Sealing skirting boards
  - 填補廚櫃之間的空隙  
Filling gaps between cabinets
  - 密封牆壁角落  
Sealing wall corner

### 適用於 Suitable For

- 木材  
Timber
- 石膏板  
Plasterboard
- 磚頭  
Brick
- 玻璃  
Glass
- 鋁  
Aluminium
- 陶瓷  
Ceramics
- 油漆表面  
Paint
- 其他建築材料  
Other building materials

### 技術特性 Technical Features

- 超強彈性 - 適用於需要彈性及會有輕微移動的裂縫  
Flexible - Suitable for those applications with slight movement and require flexibility
- 可直接塗上水性及油性油漆  
Paintable with water and oil based paints
- 耐候性強 - 適用於室內及室外  
Weatherproof - Suitable for interior and exterior applications
- 不下陷  
Sag resistant
- 施工容易、可用水清潔  
Easy to apply, water clean up
- 低氣味  
Low odour
- 多種顏色選擇  
Different color

## 施工貼士 Application Tips

- 不應在低於-5℃的環境中使用及於0℃環境中儲存  
Should not be applied at temperatures below -5℃ and stored at temperatures below 0℃
- 若即將下雨應避免在戶外使用。施工後應採取防水措施，直至填縫劑完全固化，上漆可改善填縫劑的耐候性  
Should not be used outside if rain is imminent. Once applied it should be protected from rain until firmly skinned, painting will improve exterior durability
- 如於長期浸水或經常潮濕的地方建議使用犀利牌防霉浴室玻璃膠或犀利牌中性玻璃膠  
For permanent water immersion or in constantly damp areas, Wet Area / Neutral Silicone Sealant is recommended

## 技術參數 Technical Details & Performance

性能 Property	典型值 Typical Result
VOC含量 VOC Content	<2%
可承受縫隙移動 Joint Movement Capability	不超過原縫闊度的±10% ±10% of original joint width

## 固化時間 Cure Time

所需的時間取決於施工的溫度及濕度，在低溫或高濕度時需要更長的時間  
Time for cure depends on temperature and humidity of application, longer at low temperatures or high humidity

施工 Application	20分鐘 20 minutes	60分鐘 60 minutes	7天 7 Days
	結皮 Skin Forming	指觸乾燥 Tack Free	完全乾固 Full Cure

產品 Product	包裝 Packing	顏色 Colour	色號 Colour Code	產品編號 Product Code
犀利牌 彈性填縫劑 No More Gaps	475g	白色 White	N01	115263-475G
		櫟木色 Light Brown	N02	113566-475G
	450g	灰色 Grey	N03	108791-450G
		棉白色 Cotton White	N04	129970-450G
		米色 Cream	N05	116307-450G
		黑色 Black	N06	116314-450G
		象牙色 Ivory	N07	116321-450G
		杏色 Terracotta	N08	116338-450G
		深灰色 Charcoal	N09	116352-450G
		紫檀色 Brown	N10	116376-450G
		磚紅色 Baked Earth	N11	122506-450G
		駝色 Cedar	N12	116390-450G
		淺灰色 Light Grey	N13	116369-450G
		咖啡色 Coffee	N14	116345-450G
		卡其色 Vanilla	N15	116291-450G

## 犀利牌中性玻璃膠 Neutral Silicone Sealant



室內外使用  
Indoor & Outdoor



無腐蝕性  
Non Corrosive



低VOC  
Low VOC



### 產品說明 Description

犀利牌中性玻璃膠是一款多功能防水密封膠，適用於室內外的各種密封應用。  
Selley's neutral silicone sealant is a waterproofing multipurpose sealant, and ideal for interior or exterior sealing applications around the home.

### 用途 Uses

- 適用於 Ideal for :
- 密封浴缸、鋅盤、廚房、浴屏  
Baths, vanities, kitchen and shower screens
  - 較熱、較潮濕的地方  
Any area subject to hot, humid or wet conditions

### 適用於 Suitable For

- 玻璃  
Glass
- 鍍鋅鋼  
Galvanised steel
- 木材  
Wood
- 瓷磚  
Tiles
- 鋁  
Aluminum
- 混凝土  
Concrete
- 瓷磚  
Ceramic
- 水泥  
Grout

### 技術特性 Technical Features

- 彈性持久  
Remains flexible
- 快乾  
Fast curing
- 不起泡  
Non-bubbling
- 不垂流  
Low slump
- 不腐蝕金屬  
No metal corrosion
- 固化時不收縮  
Does not shrink when curing
- 低氣味  
Low odour

## 施工貼士 Application Tips

- 不適用於聚乙烯、聚丙烯、聚四氟乙烯  
Not suitable for use on PE, PP or Teflon
- 不可上漆  
Cannot be painted over
- 如需密封魚缸，建議使用犀利牌多用途透明玻璃膠  
For sealing fish tanks, Silicone Sealant Clear is recommended
- 不推薦用於與食物、食具及食水有直接接觸的地方  
Not recommended for areas in direct contact with food, eating utensils and drinking water
- 不適用於長期被水浸或水線下的地方  
Not for permanent water immersion or below water-line use
- 長期處於黑暗地方會出現變黃情況  
Will yellow when exposed to darkness

## 技術參數 Technical Details & Performance

性能 Property	典型值 Typical Result
VOC含量 VOC Content	≤4% below/equal to 4%
可承受縫隙移動 Joint Movement Capability	不超過原縫闊度的±25% ±25% of original joint width

## 固化時間 Cure Time

所需的時間取決於應用環境

Time for strong bond/cure depends on nature and condition of application

施工 Application	4-8分鐘 4-8 minutes	48小時 48 hours
	結皮 Skin Forming	完全乾固 Full Cure

產品 Product	包裝 Packing	顏色 Colour	產品編號 Product Code
犀利牌中性玻璃膠 Neutral Silicone Sealant	300g	白色 White	000579-300G
		透明 Clear	000586-300G
		灰色 Grey	000593-300G
		黑色 Black	000609-300G
		銀灰色 Aluminium	130723-300G

## 犀利牌防霉浴室玻璃膠 Wet Area



**25年  
品質保證#**  
25 year quality  
guarantee#



**防霉防菌、  
中性無味**  
Mould repellent &  
Neutral based with  
Low odour



**耐熱防水**  
Heat resistant &  
Waterproof



### 產品說明 Description

犀利牌防霉浴室玻璃膠是一種中性（不含酸性）固化，具25年品質保證#、抗黴菌及真菌的有機矽膠密封膠。

Wet Area Silicone is a high grade neutral (non-corrosive) curing, one part silicone sealant with mould and fungal resistance with 25 years quality guarantee#.

### 用途 Uses

適用於 Ideal for :

- 淋浴、浴缸、水療浴場  
Showers, baths, spas.
- 密封水槽和水管設備的縫隙  
Sealant for gaps around sinks and plumbing fixtures

### 適用於 Suitable For

- 瓷磚及陶瓷  
Tiles & Ceramics
- 玻璃  
Glass
- 橡膠  
Rubber
- 混凝土  
Concrete
- 金屬（銅和黃銅配件）  
Metals (copper and brass fittings)
- 水泥  
Grout
- 不鏽鋼  
Stainless steel
- 塑膠\*  
Most plastics\*

### 技術特性 Technical Features

- #彈性持久 - 不收縮、斷裂、碎裂或硬化  
#Remains flexible - will not shrink, crack, crumble or dry out
- 阻止霉菌及真菌增長  
Resistant to growth of unsightly mould and fungus
- 能抵禦濕氣、熱煮食油及蒸氣  
Resists moisture, hot cooking oils and steam
- 乾後不收縮  
Does not shrink when drying
- 無腐蝕性、低氣味  
Non corrosive and low odour
- 優異的附著力能形成持久密封  
Superior adhesion can forms a durable seal

## 施工貼士 Application Tips

- \*密封前請預先測試（不適用於聚丙烯及特氟龍）  
\* Pre-test to determine compatibility (not suitable for PP or Teflon)
- 不可上漆  
Cannot be painted over
- 如需密封魚缸，建議使用犀利牌多用途透明玻璃膠  
For sealing fish tanks, Silicone Sealant Clear is recommended
- 不推薦用於與食物、食具及食水有直接接觸的地方  
Not recommended for areas in direct contact with food, eating utensils and drinking water
- 不適用於會滲油或溶劑的建築材料，如浸漬木  
Not suitable for building materials that bleed oils or solvents, such as impregnated wood
- 定期清潔玻璃膠表面可延長防霉效果  
Sealant must be cleaned regularly to extend mould repellent

## 技術參數 Technical Details & Performance

性能 Property	典型值 Typical Result
VOC含量 VOC Content	≤4%
可承受縫隙移動 Joint Movement Capability	不超過原縫闊度的±25% ±25% of original joint width

## 固化時間 Cure Time

所需的時間取決於應用環境，固化時間於高溫下會更快  
Time for strong bond depends on nature and condition of application, cure time will be faster at elevated temperatures

施工 Application	5分鐘 5 minutes	72小時 72 hours
	結皮 Skin Forming	完全乾固 Full Cure

產品 Product	包裝 Packing	顏色 Colour	色號 Colour Code	產品編號 Product Code
犀利牌防霉浴室玻璃膠 Wet Area	300g	白色 White	W01	114945-300G
		透明 Clear	W02	114952-300G
		米白色 Off White	W03	125002-300G
		深灰色 Dark Grey	W04	124968-300G
		淺灰色 Light Grey	W05	124982-300G
		棕色 Mocha	W06	124999-300G
		象牙色 Ivory	W07	115621-300G
		黑色 Black	W08	124975-300G

## 犀利牌暴封膠 STORM™ Sealant



採用Sil-X™技術  
適用於任何  
乾濕表面\*

With Sil-X™ technology  
can be use on any  
building surface\*



即時密封、  
停止滲漏  
Waterproof seal &  
Stop leaks instantly



可於水中使用  
Can be applied  
in the water



### 產品說明 Description

犀利牌暴封膠採用Sil-X™ 技術，不論潮濕或乾燥、室內或戶外，都能於任何建築表面\* 提供即時防水密封的效果，亦可於雨中使用以即時填補裂縫，停止滲漏。為室內或戶外填補工作的理想之選！

Storm™ Sealant with Sil-X™ technology delivers an immediate waterproof seal on any building surface\*, wet or dry, indoors or outdoors. It can even be applied in the rain to stop leaks in an instant. Perfect for interior or exterior sealing tasks!

### 用途 Uses

適用於 Ideal for :

- 即時防水密封潮濕或乾燥的任何建築表面\*  
Immediate waterproof seal on any building surface\*, wet or dry
- 於雨中即時填補裂縫  
Can even be applied in the rain to stop leaks in an instant
- 室內或戶外填補  
Interior or exterior sealing

### 適用於 Suitable For

- |                   |                         |                                |
|-------------------|-------------------------|--------------------------------|
| • 木材<br>Timber    | • 石膏板<br>Plasterboard   | • 瓷磚及陶瓷<br>Tiles &<br>Ceramics |
| • 玻璃<br>Glass     | • 石材<br>Masonry         | • 橡膠<br>Rubber                 |
| • 混凝土<br>Concrete | • 中纖板<br>MDF            | • 刨花板<br>Particleboard         |
| • 金屬<br>Metals    | • 塑膠*<br>Most plastics* |                                |

### 技術特性 Technical Features

- 防水  
Waterproof
- 制止及預防裂漏  
Stops & Prevents Leaks
- 可上漆  
Paintable
- 可於室內及戶外使用  
Indoor or outdoor use
- 耐候及抗紫外線  
Weather and UV resistant
- 高彈性  
Highly Flexible
- 防霉、低氣味  
Mould resistant and low odour

## 施工貼士 Application Tips

- \*不適用於黏接聚乙烯、聚丙烯、聚四氟乙烯  
\*Not suitable for PE, PP, PTFE
- 可即時成形及密封，但於固化前(約48小時)請勿觸碰  
Cannot be painted over
- 可上水性油漆，如油漆在暴封膠出現跣油現象，上漆前可輕作磨花  
Paint with water-based paint. If paint does not wet out sealant surface properly, lightly sand sealant before painting
- 於固化前可用松節水清潔。固化後的暴封膠可以刮或打磨的方式清除，或使用矽膠清除劑輔助  
Clean up with turps before cures. Cured sealant can be removed by scraping or sanding or with the help of Silicone Remover

## 技術參數 Technical Details & Performance

性能 Property	典型值 Typical Result
VOC含量 VOC Content	黑色 Black - 1.8% 清澈透明 Clear - 2.7% 灰色 Grey - ≤4%
垂流 Slump	0 mm
可承受縫隙移動 Joint Movement Capability	黑色/灰色 - 不超過原縫闊度的±20% Black/Grey - ±20% of original joint width 透明 - 不超過原縫闊度的±12.5% Clear - ±12.5% of original joint width

## 固化時間 Cure Time

所需的時間取決於應用環境

Time for strong cure depends on nature and condition of application

施工 Application	30分鐘 30 minutes	50分鐘 50 minutes	48小時 48 hours
即時成形及密封 Form and instant seal	黑色、灰色 - 結皮 Black, Grey - Skin Forming	清澈透明 - 結皮 Clear - Skin Forming	完全乾固 Full Cure

產品 Product	包裝 Packing	顏色 Colour	產品編號 Product Code
犀利牌暴封膠 STORM™ Sealant	290ml	黑色 Black	126047-290ML
		清澈透明 Clear	126030-290ML
		灰色 Grey	128881-290ML

## 犀利牌水中補 MarineFlex™



**採用Sil-X™技術  
適用於任何  
乾濕表面\***  
With Sil-X™ technology  
can be use on any  
building surface\*



**可防水密封或黏合**  
Waterproof seal  
or bond



**可於水中使用並固化**  
Can be applied  
&  
will cure under water



### 產品說明 Description

犀利牌水中補是採用Sil-X™技術的高性能黏合密封膠，特別適合用於維修船底、泳池、水缸及任何需要達至防水黏合或密封的地方。水中補可直接於水中使用並固化，而無需事先為設施進行放水。相比傳統的黏合劑，水中補更為耐用而且擁有更強的紫外線抗性。

Marine Flex™ is a high performance adhesive sealant with Sil-X™ technology that can be used on boats, pools & spas, where you need a water proof seal or bond, even under water. It can be applied & will cure under water. No need to drain your pool or spa. Compared to traditional polyurethane it provides a more durable seal & bond with superior UV weather resistance.

### 用途 Uses

適用於 Ideal for :

- 維修船底、泳池及水缸  
Repair Boats, pools & spas
- 需防水黏合或密封的地方  
Areas that require waterproof seal or bond
- 完全乾燥的醇酸樹脂磁漆、油性、水性及環氧樹脂類油漆表面  
Fully dried alkyd enamel, oil based, waterbased, and epoxy paints

### 適用於 Suitable For

- |                              |                   |                             |
|------------------------------|-------------------|-----------------------------|
| • 鋁<br>Aluminium             | • 黃銅<br>Brass     | • 玻璃<br>Glass               |
| • 電鍍鋼板<br>Galvanised steel   | • 凝膠塗層<br>Gelcoat | • 不鏽鋼<br>Stainless Steel    |
| • 亞加力膠<br>Acrylic glass      | • 聚氯乙烯<br>PVC     | • 玻璃纖維<br>Fibreglass        |
| • 混凝土*<br>Concrete*          | • 木材*<br>Timber*  | • 瓷磚及陶瓷<br>Tiles & Ceramics |
| • 聚碳酸酯(防彈膠)<br>Polycarbonate |                   |                             |

### 技術特性 Technical Features

- 防水  
Waterproof
- 可於水中使用  
Suitable for above and below waterline
- 無須底漆  
No primer required
- 吸收及緩衝震動  
Shock absorbing and vibration dampening
- 不含溶劑及異氰酸酯  
Solvent-free and Isocyanate-free
- 乾後可打磨及上漆  
Sandable and paintable when dry
- 耐候、抗紫外線  
Weather and UV resistant
- 室內外可使用  
Suitable for interior and exterior applications
- 不流掛  
Non-sagging

**施工貼士** Application Tips

- 只適用於密封或上漆後的表面  
\*Can be used on only when sealed /primed and painted
- ^不適用於黏接聚乙烯、聚丙烯、聚四氟乙烯  
^Not suitable for PE, PP, PTFE
- 請儲存於30°C 以下、清涼及乾爽的環境  
Store in cool, dry conditions below 30°C
- 如油漆在水中補上出現跳油現象，  
上漆前可輕作磨花  
If paint does not wet out sealant surface properly,  
lightly sand sealant before painting

**技術參數** Technical Details & Performance

性能 Property	典型值 Typical Result
VOC含量 VOC Content	≤4%
垂流 Slump	< 1mm
伸延性 Elongation	125%

**固化時間** Cure Time

所需的時間取決於應用環境

Time for strong bond/cure depends on nature and condition of application

施工 Application	40分鐘 40 minutes	48小時 48 hours
	結皮 Skin Forming	完全乾固 Full Cure

產品 Product	包裝 Packing	顏色 Colour	產品編號 Product Code
犀利牌水中補 MarineFlex™	410g	白色 White	127419-410G

## 塑膠專用強力膠 Power Grip All Plastics



絕大部分塑膠適用  
Suitable for most plastics



耐撞擊  
Impact resistant



可黏接非塑膠表面  
Could stick to non-plastics surfaces



### 產品說明 Description

犀利牌塑膠專用強力膠是專門為塑膠而調配的黏合劑及底膠，可為所有塑膠材料\* (包括聚乙烯、聚丙烯和ABS)提供強大黏合力。  
SELLEYS Power Grip All Plastics is a specially formulated adhesive and primer system which delivers a strong bond on all plastics\*, even PP, PE and ABS.

### 用途 Uses

- 修復日常生活中的塑膠產品  
Repairing any plastic products

### 適用於 Suitable For

- 幾乎所有塑膠  
Almost all plastics
- 木材  
Timber
- 陶瓷  
Ceramics
- 橡膠#  
Rubber#
- 金屬  
Metals
- 皮革#  
Leather#

### 技術特性 Technical Features

- 幾乎全塑膠適用  
Suitable for almost all plastics
- 於塑膠黏力高達20倍  
Up to 20 times bonding strength on plastics
- 耐撞擊  
Impact resistant
- 乾後透明  
Dries Clear
- 不須使用夾具  
No Clamping Necessary

### 技術參數 Technical Details & Performance

性能 Property	典型值 Typical Result
可承受溫度 Temperature Limits	-15°C 至 +70°C -15°C to +70°C

### 施工貼士 Application Tips

- 黏接前請於每個塑膠表面上塗一層底膠，請勿於非塑膠表面使用底膠筆。  
Apply a coat of primer to each plastic surface before applying glue. Do not apply primer to non-plastic surface.
- \*黏接前請先測試 (\*不適用於特氟龍、玻璃及聚苯乙烯)。  
\*Pre-test to determine compatibility (\*not suitable for PTFE, glass and foam)
- 請在通風良好的地方使用以避免白化反應，亦可使用丙酮擦拭去除白化部位 (請先確認溶劑不會破壞表面)。  
To avoid whitening effect, use in well ventilated areas. The whitening effect can be removed by wiping with acetone (ensure solvent would not damage surface).
- 要達至最佳黏合效果，黏合的表面需完全吻合。  
Bond strength is excellent where surfaces to be bonded are a good fit.
- 不適用於修復盛載高溫液體的器皿。  
Not suitable for repairing items that contain hot liquids.

### 固化時間 Cure Time

所需的時間取決於應用環境，使用份量愈多，乾固需時會延長。  
Time for strong bond depends on nature and condition of application, glue cure more slowly when large amounts are used.

施工 Application	30秒 30 seconds	30分鐘 30 minutes	24小時 24 hours
	黏合 Grab	可正常使用 For Practical Use	完全乾固 Full Cure

產品 Product	包裝 Packing	顏色 Colour	產品編號 Product Code
犀利牌塑膠專用強力膠 Power Grip All Plastics	3mL	透明 Clear	133182

## 犀利牌特快強力膠 Supa Glue



**即時黏合**  
Instant bond



**10秒內固定**  
Super Strong bonds  
in 10 seconds



**耐熱抗水**  
Heat & Water resistant



### 產品說明 Description

犀利牌特快強力膠是一種快乾的氰基丙烯酸酯膠黏劑，乾後透明無色。  
Supa Glue is a fast setting cyanoacrylic acid ester based adhesive that dries colourless.

### 用途 Uses

適用於 Ideal for : · 需要快速黏合的小型維修  
Small repair jobs for instant bond

### 適用於 Suitable For

- 非滲透性表面 Non-porous surfaces
- 金屬 Metals
- 木材 Timber
- 塑膠\* Most Plastics\*
- 橡膠 Rubber

### 技術特性 Technical Features

- 快乾 Quick setting
- 乾後透明，不具彈性 Dries clear, not flexible
- 不需混合及使用夾具 No mixing required and clamping necessary
- 耐熱抗水 Heat and water resistant

### 技術參數 Technical Details & Performance

性能 Property	典型值 Typical Result
可承受溫度 Temperature Limits	-55℃至 +75℃ -55℃ to +75℃
耐熱性 Heat Resistant	80℃

### 施工貼士 Application Tips

- \*黏接前請預先測試（不適用於聚乙烯、聚丙烯及聚四氟乙烯）  
\*Pre-test to determine compatibility (not suitable for PE, PP or PTFE)
- 請在通風良好的地方使用以避免白化反應，亦可使用丙酮擦拭去除白化部位（請先檢查溶劑不會破壞表面）  
To avoid whitening effect, use in well ventilated areas. The whitening effect can be removed by wiping with acetone (First check that the solvent will not damage the surface)
- 要達至最佳黏合效果，黏合的表面需完全吻合  
Bond strength is excellent where surfaces to be bonded are a good fit
- 不推薦用於紙張或皮革  
Not recommended for use on paper or leather
- 不適用於修復盛載高溫液體的器皿  
Not suitable for repairing items that contain hot liquids

### 固化時間 Cure Time

所需的時間取決於應用環境  
Time for strong cure depends on nature and condition of application

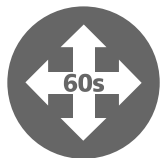
施工 Application	10秒 10 seconds	12小時後 12 hours
	黏合 Grab	完全乾固 Full Cure

產品 Product	包裝 Packing	顏色 Colour	產品編號 Product Code
犀利牌特快強力膠 Supa Glue	3 x 1g	透明 Clear	123954 (131140)
	2g		110411R (131119)
	3ml		105608R (131171)

## 犀利牌可調整超能膠 Supa Glue Strong & Adjustable



適用於垂直表面  
Ideal for vertical jobs



60秒內可調整位置  
60 seconds to reposition



啫喱狀、不滴漏  
Gel, non-drip



### 產品說明 Description

犀利牌可調整超能膠是一種凝膠狀的黏膠，容許更多調整位置的時間，令黏合效果更理想。Supa Glue Strong & Adjustable is a gel type adhesive that allows extra time to align or reposition surfaces, for perfect results.

### 用途 Uses

適用於 Ideal for :

- 垂直表面的小型維修  
Small repair jobs for vertical surfaces

### 適用於 Suitable For

- 木材 Timber
- 橡膠 Rubber
- 金屬 Metals
- 陶瓷 Ceramics
- 塑膠\* Most plastics\*
- 皮革# Leather#

### 技術特性 Technical Features

- 能重新調整位置  
More time to arrange and reposition
- 不需混合及使用夾具  
No mixing required and clamping necessary
- 垂直施工不滴漏  
Non-drip gel consistency is ideal for vertical jobs
- 乾後透明  
Dries clear
- 抗水性  
Water resistant
- 不會立即黏合手指  
No immediate finger bonding

### 技術參數 Technical Details & Performance

性能 Property	典型值 Typical Result
可承受溫度 Temperature Limits	-55℃至 +75℃ -55℃ to +75℃

### 施工貼士 Application Tips

- \*黏接前請先測試，黏膠可能會令皮革硬化或脫色  
\*Test first as some leather may become hardened or discoloured
- \*黏接前請預先測試（不適用於聚乙烯、聚丙烯及聚四氟乙烯）  
\*Pre-test to determine compatibility (not suitable for PE, PP or PTFE)
- 黏膠會比一般超能膠延遲20至30秒黏住皮膚，情況視乎膚質及黏膠份量而定  
Adhesive will stick to skin, but it is delayed 20 to 30 seconds, depending in skin type and amount of adhesive
- 請在通風良好的地方使用以避免白化反應，亦可使用丙酮擦拭去除白化部位（請先檢查溶劑不會破壞表面）  
To avoid whitening effect, use in well ventilated areas. The whitening effect can be removed by wiping with acetone (First check that the solvent will not damage the surface)
- 不適用於修復盛載高溫液體的器皿  
Not suitable for repairing items that contain hot liquids

### 固化時間 Cure Time

所需的時間取決於應用環境，使用份量愈多，乾固需時會延長。

Time for strong bond depends on nature and condition of application, glue cure more slowly when large amounts are used.

施工 Application	60秒 60 seconds	30分鐘 30 minutes	12小時 12 hours
初始固化 Initial Cure			
可正常使用 For Practical Use			
完全乾固 Full Cure			

產品 Product	包裝 Packing	顏色 Colour	產品編號 Product Code
犀利牌可調整超能膠 Supa Glue Strong & Adjustable	3g	透明 Clear	115416 (131218)

## 犀利牌耐撞擊超能膠 Supa Glue Shock Proof



耐撞擊  
Impact resistant



耐熱 150°C  
Heat resistant up to 150°C



黏接金屬特強  
Superior bond on metals



### 產品說明 Description

犀利牌耐撞擊超能膠是一種高強度、橡膠改良的氰基丙烯酸酯（超能膠）膠黏劑，乾後透明。  
Supa Glue Shock Proof is a high strength, rubber modified cyanoacrylate (supa glue) based adhesive that dries clear.

### 用途 Uses

適用於 Ideal for :  
· 需要有耐撞擊效果的小型維修  
Small repair jobs when impact resistant is required

### 適用於 Suitable For

- 木材  
Timber
- 塑膠\*  
Most plastics\*
- 陶瓷  
Ceramics
- 金屬  
Metals
- 橡膠  
Rubber
- 皮革#  
Leather#

### 技術特性 Technical Features

- 耐撞擊  
Impact Resistant
- 快乾  
Fast setting
- 耐熱  
Heat Resistant
- 黏合金屬表現優越  
Superior bond on metals
- 乾後透明  
Dries Clear
- 不需混合及使用夾具  
No mixing required and clamping necessary

### 固化時間 Cure Time

所需的時間取決於應用環境  
Time for strong cure depends on nature and condition of application

施工 Application	3分鐘 3 minutes	72小時 72 hours
	黏合 Grab	完全乾固 Full Cure

### 施工貼士 Application Tips

- #黏接前請先測試，黏膠可能會令皮革硬化或脫色  
#Test first as some leather may become hardened or discoloured
- \*黏接前請預先測試（不適用於聚乙烯、聚丙烯及聚四氟乙烯）  
\*Pre-test to determine compatibility (not suitable for PE, PP or PTFE)
- 請在通風良好的地方使用以避免白化反應，亦可使用丙酮擦拭去除白化部位（請先檢查溶劑不會破壞表面）  
To avoid whitening effect, use in well ventilated areas. The whitening effect can be removed by wiping with acetone (First check that the solvent will not damage the surface)
- 不適用於長期潮濕表面  
Not suitable for surfaces that will be continually wet
- 只適用於室內  
For interior use only
- 不適用於修復盛載高溫液體的器皿  
Not suitable for repairing items that contain hot liquids

### 技術參數 Technical Details & Performance

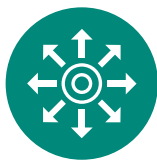
性能 Property	典型值 Typical Result
可承受溫度 Temperature Limits	-55°C 至 +75°C -55°C to +75°C
耐熱性 Heat Resistant	鋼鐵(48小時固化後) - 150°C Steel (cure for 48 hours)
耐撞擊性 Impact Resistance	為一般氰基丙烯酸酯黏合劑的4倍 Have 4 times impact resistance of standard cyanoacrylate adhesives

產品 Product	包裝 Packing	顏色 Colour	產品編號 Product Code
犀利牌耐撞擊超能膠 Supa Glue Shock Proof	3ml	透明 Clear	115485

## 犀利牌快補膠 (補鞋膠) Kwik Grip (Shoe Adhesive)



持久穩固  
Lasting bond



超強彈性  
Flexibility



耐熱抗水  
Heat resistant &  
Waterproof



### 產品說明 Description

犀利牌快補膠 (補鞋膠) 是溶劑型具彈性的接觸黏合萬能膠，適用於滲透及非滲透表面。Kwik Grip (Shoe Adhesive) is a solvent based polychloroprene contact adhesive. It is suitable for porous and non porous surfaces.

### 用途 Uses

- 適用於 Ideal for :
- 黏合鞋子、手提袋及行李箱等  
Bonding shoes and handbags and luggage etc.
  - 修補枱角椅腳及皮具  
Table corner, Chair legs and leather repair

### 適用於 Suitable For

- 木材 Timber
- 橡膠 Rubber
- 帆布 Canvas
- 金屬 Metals
- 皮革 Leather
- 毛氈 Felt
- 塑膠\* Most plastics\*
- 軟木 Cork

### 技術特性 Technical Features

- 即時黏合 Instant bond
- 耐熱 Heat resistant
- 具彈性 Flexible
- 室內外皆可使用 Interior and Exterior

### 施工貼士 Application Tips

- \*黏接前請預先測試 (不適用於聚乙烯、聚丙烯、乙烯基薄板及聚苯乙烯)  
\*Pre-test to determine compatibility (not suitable for PE, PP, vinyl sheeting or polystyrene)
- 不適用於黏合粗糙、相互間不吻合的表面  
Not suitable for bonding rough, ill-fitting surfaces

### 技術參數 Technical Details & Performance

性能 Property	典型值 Typical Result
VOC含量 VOC Content	<70g/L
耐熱性 Heat Resistant	130 °C

### 固化時間 Cure Time

所需的時間取決於應用環境  
Time for strong cure depends on nature and condition of application

施工 Application	20分鐘 20 minutes	24小時 24 hours
	初始固化 Initial Cure	完全乾固 Full Cure

產品 Product	包裝 Packing	顏色 Colour	產品編號 Product Code
犀利牌快補膠 (補鞋膠) Kwik Grip (Shoe Adhesive)	15ml	黃色 Yellow	608604 (131379)
	50ml		104830S (131324)

## 犀利牌快補膠 (透明配方) Kwik Grip Crystal Clear



透明水晶色  
Crystal Clear



低氣味  
Low Odour



持久穩固  
Lasting bond



### 產品說明 Description

犀利牌快補膠 (透明配方) 專為黏合大範圍而平滑緊貼的物件而設。快補膠 (透明配方) 耐用持久，具有耐熱及耐水功能。

Kwik Grip Crystal Clear is excellent for achieving a neat, clear finish when bonding large, flat, close-fitting surfaces. It forms a durable, heat and water resistant bond.

### 用途 Uses

適用於 Ideal for :

- 適於黏合椅桌或工作台上的單板和層壓板的工作  
Tasks such as veneers and laminates for benches or table tops

### 施工貼士 Application Tips

- \*黏接前請預先測試 (不適用於聚乙烯及聚丙烯)  
\*Pre-test to determine compatibility (not suitable for PE or PP)

### 適用於 Suitable For

- 單板 Veneers
- 皮革 Leather
- 毛氈 Felt
- 橡膠 Rubber
- 帆布 Canvas
- 木材 Timber
- 軟木 Cork
- 金屬 Metal
- 層壓板 Laminate

### 技術參數 Technical Details & Performance

性能 Property	典型值 Typical Result
耐熱性 Heat Resistance	80°C

### 技術特性 Technical Features

- 施工時及乾後透明  
Applies Clear, Dries Clear
- 耐用持久  
Strong and Durable
- 耐熱抗水  
Heat and Water Resistant

### 固化時間 Cure Time

所需的時間取決於應用環境

Time for strong cure depends on nature and condition of application

施工 Application	15-30分鐘 15-30 minutes	24小時 24 hours
	初始固化 Initial Cure	完全乾固 Full Cure

產品 Product	包裝 Packing	顏色 Colour	產品編號 Product Code
犀利牌快補膠 (透明配方) Kwik Grip Crystal Clear	50ml	透明水晶色 Crystal Clear	125606

## 犀利牌快乾混合AB膠 Epoxy Fix Super Fast



5分鐘快乾  
5 mins fast cure



可填補缺口  
Ideal for uneven surfaces



抗水  
Water resistant



### 產品說明 Description

犀利牌快乾混合AB膠是一種結合了環氧樹脂黏合劑的高強度品質及接觸黏合劑的快乾功能的雙組份黏合劑。

Epoxy Fix Super Fast is a two-component resin adhesive that combines the high quality strength of epoxy adhesives with the extra fast setting characteristics of contact adhesives.

### 用途 Uses

適用於 Ideal for :

- 黏合模型、瓷器、茶壺等  
Bonding models, porcelain, and Teapots etc.

### 適用於 Suitable For

- 木材  
Timber
- 硬質塑料\*  
Rigid Plastics\*
- 陶器  
Pottery
- 混凝土  
Concrete
- 金屬  
Metals
- 瓷器  
Porcelain
- 大理石  
Marble

### 技術特性 Technical Features

- \*黏貼前請預先測試  
\*Pre-test to determine compatibility

### 施工貼士 Application Tips

- 5分鐘快乾  
5 minutes fast cure
- 乾後透明  
Dries clear
- 不需夾具  
No clamping necessary
- 防水  
Water resistant

### 技術參數 Technical Details & Performance

性能 Property	典型值 Typical Result
混合使用期限 Pot Life	3-5分鐘 3-5 minutes
混合比重 Mixing Ratio	1:1

### 固化時間 Cure Time

所需的時間取決於應用環境  
Time for strong cure depends on nature and condition of application

施工 Application	5分鐘 5 minutes	24小時 24 hours
	初始固化 Initial Cure	完全乾固 Full Cure

產品 Product	包裝 Packing	顏色 Colour	產品編號 Product Code
犀利牌快乾混合AB膠 Epoxy Fix Super Fast	15ml	透明 Clear	300373 (131287)

## 犀利牌金屬混合AB膠 Epoxy Fix Super Steel



5分鐘快乾  
5 mins fast cure



金屬焊接般穩固  
Chemically welds and repair metal



抗水  
Water resistant



### 產品說明 Description

犀利牌金屬混合AB膠是內含鋼鐵的熱固性雙組份黏合劑。

Epoxy Fix Super Steel is a steel filled thermosetting two-component resin adhesive filler.

### 用途 Uses

適用於 Ideal for :

- 維修金屬印版  
Repairing metal forming dies
- 填補金屬用具的缺口  
Filling gaps between metal pipes
- 密封金屬導管的裂縫  
Sealing joints between metal pipes

### 適用於 Suitable For

- 金屬  
Metals
- 槽  
Tanks
- 導管  
Pipes
- 製作用具、樣板及金屬印版  
Making tools, templates and metal forming dies
- 活門  
Valves

### 技術特性 Technical Features

- 5分鐘快乾  
5 minutes fast cure
- 乾後形成堅牢的金屬面  
Form a durable metallic mass when dried
- 不需夾具  
No clamping necessary
- 乾後可鑽孔、打磨及銼  
Dry can be drilled, sanded and machined
- 防水  
Water resistant

### 技術參數 Technical Details & Performance

性能 Property	典型值 Typical Result
混合使用期限 Pot Life	3-6分鐘 3-6 minutes
混合比重 Mixing Ratio	1:1

### 固化時間 Cure Time

所需的時間取決於應用環境

Time for strong cure depends on nature and condition of application

施工 Application	5分鐘 5 minutes	24小時 24 hours
	初始固化 Initial Cure	完全乾固 Full Cure

產品 Product	包裝 Packing	顏色 Colour	產品編號 Product Code
犀利牌金屬混合AB膠 Epoxy Fix Super Steel	15ml	灰色 Grey	300380 (131300)

## 犀利牌暴封膠 STORM™ Sealant



採用Sil-X™技術  
適用於任何  
乾濕表面\*

With Sil-X™ technology  
can be use on any  
building surface\*



即時密封、  
停止滲漏

Waterproof seal &  
Stop leaks instantly



可於水中使用

Can be applied  
in the water



### 產品說明 Description

犀利牌暴封膠採用Sil-X™ 技術，不論潮濕或乾燥、室內或戶外，都能於任何建築表面\* 提供即時防水密封的效果，亦可於雨中使用以即時填補裂縫，停止滲漏。為室內或戶外填補工作的理想之選！

Storm™ Sealant with Sil-X™ technology delivers an immediate waterproof seal on any building surface\*, wet or dry, indoors or outdoors. It can even be applied in the rain to stop leaks in an instant. Perfect for interior or exterior sealing tasks!

### 用途 Uses

適用於 Ideal for :

- 即時防水密封潮濕或乾燥的任何建築表面\*  
Immediate waterproof seal on any building surface\*, wet or dry
- 於雨中即時填補裂縫  
Can even be applied in the rain to stop leaks in an instant
- 室內或戶外填補  
Interior or exterior sealing

### 適用於 Suitable For

- |                   |                         |                                |
|-------------------|-------------------------|--------------------------------|
| • 木材<br>Timber    | • 石膏板<br>Plasterboard   | • 瓷磚及陶瓷<br>Tiles &<br>Ceramics |
| • 玻璃<br>Glass     | • 石材<br>Masonry         | • 橡膠<br>Rubber                 |
| • 混凝土<br>Concrete | • 中纖板<br>MDF            | • 刨花板<br>Particleboard         |
| • 金屬<br>Metals    | • 塑膠*<br>Most plastics* |                                |

### 技術特性 Technical Features

- 防水  
Waterproof
- 制止及預防裂漏  
Stops & Prevents Leaks
- 可上漆  
Paintable
- 可於室內及戶外使用  
Indoor or outdoor use
- 耐候及抗紫外線  
Weather and UV resistant
- 高彈性  
Highly Flexible
- 防霉、低氣味  
Mould resistant and low odour

## 施工貼士 Application Tips

- \*不適用於黏接聚乙烯、聚丙烯、聚四氟乙烯  
\*Not suitable for PE, PP, PTFE
- 可即時成形及密封，但於固化前(約48小時)請勿觸碰  
Cannot be painted over
- 可上水性油漆，如油漆在暴封膠出現跣油現象，上漆前可輕作磨花  
Paint with water-based paint. If paint does not wet out sealant surface properly, lightly sand sealant before painting
- 於固化前可用松節水清潔。固化後的暴封膠可以刮或打磨的方式清除，或使用矽膠清除劑輔助  
Clean up with turps before cures. Cured sealant can be removed by scraping or sanding or with the help of Silicone Remover

## 技術參數 Technical Details & Performance

性能 Property	典型值 Typical Result
VOC含量 VOC Content	清澈透明 Clear - 2.7%
垂流 Slump	0 mm
可承受縫隙移動 Joint Movement Capability	透明 - 不超過原縫闊度的±12.5% Clear - ±12.5% of original joint width

## 固化時間 Cure Time

所需的時間取決於應用環境  
Time for strong cure depends on nature and condition of application

施工 Application	50分鐘 50 minutes	48小時 48 hours
即時成形及密封 Form and instant seal	清澈透明 - 結皮 Clear - Skin Forming	完全乾固 Full Cure

產品 Product	包裝 Packing	顏色 Colour	產品編號 Product Code
犀利牌暴封膠 STORM™ Sealant	75g	清澈透明 Clear	130266

## 犀利牌防霉中性玻璃膠 Wet Area



**25年  
品質保證#**  
25 year quality  
guarantee#



**防霉防菌、  
中性無味**  
Mould repellent &  
Neutral based with  
Low odour



**耐熱防水**  
Heat resistant &  
Waterproof



### 產品說明 Description

犀利牌防霉浴室玻璃膠是一種中性（不含酸性）固化，具25年品質保證#、抗黴菌及真菌的有機矽膠密封膠。

Wet Area Silicone is a high grade neutral (non-corrosive) curing, one part silicone sealant with mould and fungal resistance with 25 years quality guarantee#.

### 用途 Uses

適用於 Ideal for :

- 淋浴、浴缸、水療浴場  
Showers, baths, spas.
- 密封水槽和水管設備的縫隙  
Sealant for gaps around sinks and plumbing fixtures

### 適用於 Suitable For

- 瓷磚及陶瓷  
Tiles & Ceramics
- 玻璃  
Glass
- 橡膠  
Rubber
- 混凝土  
Concrete
- 金屬（銅和黃銅配件）  
Metals (copper and brass fittings)
- 水泥  
Grout
- 不鏽鋼  
Stainless steel
- 塑膠\*  
Most plastics\*

### 技術特性 Technical Features

- #彈性持久 - 不收縮、斷裂、碎裂或硬化  
#Remains flexible - will not shrink, crack, crumble or dry out
- 阻止霉菌及真菌增長  
Resistant to growth of unsightly mould and fungus
- 能抵禦濕氣、熱煮食油及蒸氣  
Resists moisture, hot cooking oils and steam
- 乾後不收縮  
Does not shrink when drying
- 無腐蝕性、低氣味  
Non corrosive and low odour
- 優異的附著力能形成持久密封  
Superior adhesion can forms a durable seal

## 施工貼士 Application Tips

- 密封前請預先測試（不適用於聚丙烯及特氟龍）  
\* Pre-test to determine compatibility (not suitable for PP or Teflon)
- 不可上漆  
Cannot be painted over
- 如需密封魚缸，建議使用犀利牌多用途透明玻璃膠  
For sealing fish tanks, Silicone Sealant Clear is recommended
- 不推薦用於與食物、食具及食水有直接接觸的地方  
Not recommended for areas in direct contact with food, eating utensils and drinking water
- 不適用於會滲油或溶劑的建築材料，如浸漬木  
Not suitable for building materials that bleed oils or solvents, such as impregnated wood
- 定期清潔玻璃膠表面可延長防霉效果  
Sealant must be cleaned regularly to extend mould repellent

## 技術參數 Technical Details & Performance

性能 Property	典型值 Typical Result
VOC含量 VOC Content	≤4%
可承受縫隙移動 Joint Movement Capability	不超過原縫闊度的±25% ±25% of original joint width

## 固化時間 Cure Time

所需的時間取決於應用環境，固化時間於高溫下會更快  
Time for strong bond depends on nature and condition of application, cure time will be faster at elevated temperatures

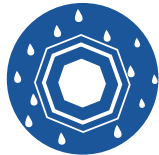
施工 Application	5分鐘 5 minutes	72小時 72 hours
	結皮 Skin Forming	完全乾固 Full Cure

產品 Product	包裝 Packing	顏色 Colour	產品編號 Product Code
犀利牌防霉中性玻璃膠 Wet Area	75g	白色 White	114938

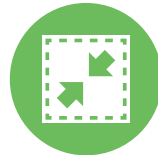
## 犀利牌多用途透明玻璃膠 Silicone Sealant



**酸性快乾**  
An acetic acid fast curing



**持久密封**  
Forms a durable seal



**乾固時不收縮**  
Does not shrink when dry



### 產品說明 Description

犀利牌多用途透明玻璃膠是一種酸性固化，單組份矽膠密封膠。  
Silicone Sealant is an acetic acid curing, one part silicone sealant.

### 用途 Uses

- 適用於 Ideal for :
- 維修大部份家居物料  
Repair many household materials
  - 填補窗框縫隙  
Filling gaps between window frames
  - 密封魚缸  
Sealing aquariums

### 適用於 Suitable For

- 木材  
Timber
- 鋁  
Aluminium
- 帆布  
Canvas
- 塑膠\*  
Most plastics\*
- 與玻璃相似的表面  
Glass like surfaces
- 玻璃  
Glass
- 不銹鋼  
Stainless steel
- 陶瓷  
Ceramics
- 橡膠  
Rubber

### 技術特性 Technical Features

- 對玻璃、金屬、木材及陶瓷有優異的附著力  
Excellent adhesion to glass, metals, timber, ceramic materials
- 持久密封  
Forms a durable seal
- 抗紫外線  
UV resistant
- 彈性持久 - 乾後不收縮、破裂、粉碎或乾枯  
Remains flexible - will not shrink, crack, crumble or dry out
- 耐候  
Weather resistant
- 防水  
Waterproof

## 施工貼士 Application Tips

- \*使用前請預先測試  
\*Pre-test to determine compatibility
- 不可上漆  
Cannot be painted over
- 不推薦應用於水線下  
Not recommended for below waterline applications
- 不會黏附含有鋅或銅的金屬、大理石、石灰石、鉛製品、混凝土、水泥製品及油質的木  
Will not adhere to zinc or copper containing metals, marble, limestone, lead, concrete, cement products and oily woods

## 技術參數 Technical Details & Performance

性能 Property	典型值 Typical Result
VOC含量 VOC Content	<70g/L
可承受溫度 Temperature Limits	160 °C
可承受接縫移動 Joint Movement Capability	不超過原縫闊度的±25% ±25% of original joint width

## 固化時間 Cure Time

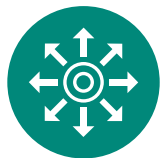
所需的時間取決於應用環境，固化時間於高溫下會更快

Time for strong bond depends on nature and condition of application, cure time will be faster at elevated temperatures

施工 Application	10分鐘 10 minutes	24小時 24 hours
	結皮 Skin Forming	完全乾固 Full Cure

產品 Product	包裝 Packing	顏色 Colour	產品編號 Product Code
犀利牌多用途透明玻璃膠 Silicone Sealant	75g	透明 Clear	106148

## 犀利牌彈性填縫劑 No More Gaps Multipurpose Gap Filler



**超強彈性**  
Flexible



**可上漆**  
Paintable



**耐候性強**  
Weather resistant



### 產品說明 Description

犀利牌彈性填縫劑是可上漆及具彈性的阿加力填縫劑，可應用於室內及室外。  
Selley's No More Gaps series is a paintable, flexible acrylic gap sealant, suitable for interior and exterior applications.

### 用途 Uses

- 適用於 Ideal for :
- 填補門窗框架與牆壁之間的縫隙  
Filling joints between door or window frame and wall
  - 密封地腳線邊沿  
Sealing skirting boards
  - 填補廚櫃之間的空隙  
Filling gaps between cabinets
  - 密封牆壁角落  
Sealing wall corner

### 適用於 Suitable For

- 木材  
Timber
- 石膏板  
Plasterboard
- 磚頭  
Brick
- 玻璃  
Glass
- 鋁  
Aluminium
- 陶瓷  
Ceramics
- 油漆表面  
Paint
- 其他建築材料  
Other building materials

### 技術特性 Technical Features

- 超強彈性 - 適用於需要彈性及會有輕微移動的裂縫  
Flexible - Suitable for those applications with slight movement and require flexibility
- 可直接塗上水性及油性油漆  
Paintable with water and oil based paints
- 耐候性強 - 適用於室內及室外  
Weatherproof - Suitable for interior and exterior applications
- 不下陷  
Sag resistant
- 施工容易、可用水清潔  
Easy to apply, water clean up
- 低氣味  
Low odour
- 多種顏色選擇  
Different color

## 施工貼士 Application Tips

- 不應在低於-5℃的環境中使用及於0℃環境中儲存  
Should not be applied at temperatures below -5℃ and stored at temperatures below 0℃
- 若即將下雨應避免在戶外使用。施工後應採取防水措施，直至填縫劑完全固化，上漆可改善填縫劑的耐候性  
Should not be used outside if rain is imminent. Once applied it should be protected from rain until firmly skinned, painting will improve exterior durability
- 如於長期浸水或經常潮濕的地方建議使用犀利牌防霉浴室玻璃膠或犀利牌中性玻璃膠  
For permanent water immersion or in constantly damo areas, Wet Area / Neutral Silicone Sealant is recommended

## 技術參數 Technical Details & Performance

性能 Property	典型值 Typical Result
VOC含量 VOC Content	<2%
可承受縫隙移動 Joint Movement Capability	不超過原縫闊度的±10% ±10% of original joint width

## 固化時間 Cure Time

所需的時間取決於施工的溫度及濕度，在低溫或高濕度時需要更長的時間  
Time for cure depends on temperature and humidity of application, longer at low temperatures or high humidity

施工 Application	20分鐘 20 minutes	60分鐘 60 minutes	7天 7 Days
	結皮 Skin Forming	指觸乾燥 Tack Free	完全乾固 Full Cure

產品 Product	包裝 Packing	顏色 Colour	產品編號 Product Code
犀利牌 彈性填縫劑 No More Gaps	150g	白色 White	502308

## 犀利牌液體釘升級配方 Liquid Nails Upgraded Formula



負重力高  
High strength



可黏合大部份物料  
Bond most of materials surfaces



耐候性強  
Weather resistant



### 產品說明 Description

犀利牌液體釘是由合成橡膠構成的溶劑型極強黏力多用途建築膠黏劑，能對大多數建築材料提供持久穩定的黏接力。

Liquid Nails is a premium grade, solvent based, synthetic rubber multipurpose construction adhesive that delivers a consistently strong and lasting bond on most building substrates.

### 用途 Uses

- 適用於 Ideal for :
- 不能施釘的地方  
Areas where nailing is not desirable
  - 地板安裝  
Sheet flooring to joists
  - 門檻及門框鑲嵌  
Door strips and frame panelling
  - 牆身鑲嵌  
Wall panelling
  - 黏接無縫地板  
Bonding seamless
  - 地腳線及天花線安裝  
Skirting boards and cornices installation

### 適用於 Suitable For

- |                        |                             |                         |
|------------------------|-----------------------------|-------------------------|
| • 木材<br>Timber         | • 石材<br>Masonry             | • 橡膠<br>Rubber          |
| • 石膏板<br>Plasterboard  | • 混凝土<br>Concrete           | • 玻璃<br>Glass           |
| • 中纖板<br>MDF           | • 金屬<br>Metals              | • 塑膠*<br>Most plastics* |
| • 刨花板<br>Particleboard | • 瓷磚及陶瓷<br>Tiles & Ceramics |                         |

### 技術特性 Technical Features

- 提供足夠柔韌性，令黏接部位更牢固持久  
Delivers response flexibility so your bond stays stronger and longer
- 優異的耐水及耐候性，適用於室內和室外  
Excellent resistance to water and weather makes it suitable for interior and exterior applications
- 施工簡易、在冬季低溫下亦能輕易擠出  
Easy to extrude even at low winter temperatures
- 能連接及黏合表面不平的物料  
Bridges gaps and will adhere materials with uneven surfaces
- 快速定位、迅速固化  
Fast grab and rapid cure
- 不滴流、不塌陷  
Does not drip, sag or string
- 可填補寬度為9毫米以內的縫隙  
Bridges gap up to 9mm
- 乾後可上漆  
Paintable when dry

## 施工貼士 Application Tips

- \*黏接前請預先測試  
\*Pre-test to determine compatibility
- 不適用於黏貼鏡子及緊密夾持的接合處  
Not suitable for use on mirrors and tightly clamped joints
- 高溫下黏接強度會減弱(高於50℃)。避免黏接陽光直射的金屬或較重的材料  
Bonds weaken at high temperatures (above 50℃). Avoid bonding metals or heavy materials which will be heated by direct sun
- 被黏接的材料不宜長期置於潮濕處  
Not suitable for bonding materials should not be store in constantly damp or wet areas
- 黏接發泡膠建議使用犀利牌快黏液體釘  
For polystyrene foam applications Liquid Nails Fast is recommended

## 技術參數 Technical Details & Performance

性能 Property	典型值 Typical Result
VOC含量 VOC Content	<70g/L
垂流 Slump	<6 mm
覆蓋面積 Coverage	每360克的紙管可擠出直徑為5毫米、長約15米的膠條 Each 360g cartridge will yield approx 15 meters of 5mm bead

## 黏接強度對應時間 Bond Strength Time

所需的時間取決於應用環境

Time for strong bond depends on nature and condition of application

施工 Application	20分鐘 20 minutes	24小時 24 hours	7天 7 Days
可重新定位 Can be reposition	初始黏合 Initial Bond	強力黏接 Strong Bond	最佳黏接效果 Best Bonding Strength

產品 Product	包裝 Packing	顏色 Colour	產品編號 Product Code
犀利牌液體釘升級配方 Liquid Nails Upgraded Formula	75g	啡色	502292

## 犀利牌多用途塑鋼土 Knead-It Multipurpose



**修補及重塑物件**  
Restore, Repair & Fix almost anything



**乾後可打磨、鑽孔及上漆**  
Dry can be drilled, screwed, sawn, sanded & painted



**可用於盛載食物的器皿**  
Safety for contact with eating utensils



### 產品說明 Description

犀利牌多用途塑鋼土是快乾的環氧樹脂物料，可以用於重塑或維修多種物品。  
Knead it Multipurpose is a fast setting epoxy repair system that can be used to reshape, or repair a multitude of things.

### 用途 Uses

適用於 Ideal for :

- 填補裂縫 Sealing leaks
- 修補缺口 Patching chips
- 重塑損壞的部份 Reform-reshape damaged parts

### 適用於 Suitable For

- 木材 Timber
- 金屬 Metal
- 塑膠\* Most plastics\*
- 陶瓷 Ceramics
- 石材 Masonry

### 技術特性 Technical Features

- 不下陷、不下垂、不滴落  
Will not sag, run or drip
- 重塑、重建、維修多種表面  
Reshapes, rebuilds, repairs many surfaces
- 施工後1小時可鑽孔、鋸、打磨、銼、敲打、加工或上漆  
Can be drilled, sawed, sanded, filed, tapped, machined or painted one hour after mixing
- 優良的黏合強度  
Good adhesive strength
- 優良的填補裂縫能力  
Good gap filling properties
- 可用於盛載食物的器皿  
Safety for contact with eating utensils

### 施工貼士 Application Tips

- \*黏接前請預先測試（不適用於聚乙烯、聚丙烯或聚四氟乙烯）  
\*Pre-test to determine compatibility (not suitable for PE, PP or PTFE)
- 不推薦填充或密封具移動性的接縫或裂痕  
Not recommended for filling or sealing joints/cracks subject to movement
- 氣溫高於20℃，混合使用期限會減少  
Pot life (working life) decreases above 20℃
- 如溫度低於20℃，固化時間會延長  
Set time increases at temperatures below 20℃

### 技術參數 Technical Details & Performance

性能 Property	典型值 Typical Result
操作期限 Working Life	3-5分鐘 3-5 minutes
耐熱性 Heat Resistant	連續 Continuous - 120℃ 間斷 Intermittent - 140℃

### 固化時間 Cure Time

所需的時間取決於應用環境  
Time for strong cure depends on nature and condition of application

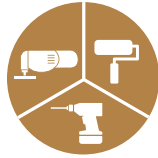
	2分鐘內 In 2minutes	1小時 1 hour	24小時 24 hours
施工 Application	5分鐘 5 minutes		24小時 24 hours
	混合 Mix	初始固化 Initial Cure	可加工 完全乾固 Can be process Full Cure

產品 Product	包裝 Packing	顏色 Colour	產品編號 Product Code
犀利牌多用途塑鋼土 Knead-It Multipurpose	50g	淺灰色 Light Grey	112361

## 犀利牌水中補塑鋼土 Knead-It Underwater



**修補及重塑  
潮濕或水位下的物件**  
Restore, Repair & Rebuild wet & underwater surfaces



**乾後可打磨、  
鑽孔及上漆**  
Dry can be drilled, screwed, sawn, sanded & painted



**可於淡水或鹹水中使用**  
Can be used under fresh or salt water



### 產品說明 Description

犀利牌水中補塑鋼土是快乾的環氧樹脂物料，可以用於重塑或維修於潮濕或水線下的物品。Knead-It Underwater is a fast setting epoxy repair system that can be used for repairing a multitude of things that damp, wet or underwater substrates.

### 用途 Uses

- 適用於 Ideal for :
- 水中維修 Emergency in-water repairs
  - 維修導管、電子設備、水箱、浴室潔具及泳池  
Repair of pipes, electrical connections, water tanks, bathroom furniture and pools
  - 修補甲板和船身的刮痕、切口、孔洞  
Patching scratches, cuts, and holes in boat decks and hulls

### 適用於 Suitable For

- 木材 Timber
- 金屬 Metals
- 塑膠\* Most plastics\*
- 陶瓷 Ceramics
- 石材 Masonry
- 玻璃 Glass
- 玻璃纖維 Fibreglass

### 技術特性 Technical Features

- 不下陷、不下垂、不滴落  
Will not sag, run or drip
- 施工後1小時可鑽孔、鋸、打磨、銼、敲打、加工或上漆  
Can be drilled, sawed, sanded, filed, tapped, machined or painted one hour after mixing
- 優良的黏合強度  
Good adhesive strength
- 優良的填補裂縫能力  
Good gap filling properties
- 可於淡水或鹹水中使用  
Can be used under fresh or salt water

### 施工貼士 Application Tips

- \*黏接前請預先測試（不適用於聚乙烯、聚丙烯或聚四氟乙烯）  
\*Pre-test to determine compatibility (not suitable for PE, PP or PTFE)
- 不推薦填充或密封具移動性的接縫或裂痕  
Not recommended for filling or sealing joints/cracks subject to movement
- 氣溫高於20℃，混合使用期限會減少  
Pot life (working life) decreases above 20℃
- 如溫度低於20℃，固化時間會延長  
Set time increases at temperatures below 20℃

### 技術參數 Technical Details & Performance

性能 Property	典型值 Typical Result
操作期限 Working Life	20-30分鐘 20-30 minutes
耐熱性 Heat Resistant	連續 Continuous - 120℃ 間斷 Intermittent - 140℃

### 固化時間 Cure Time

所需的時間取決於應用環境  
Time for strong cure depends on nature and condition of application

	12分鐘內 12 minutes	1小時 1 hour	24小時 24 hours
施工 Application	30分鐘 30 minutes		
混合 Mix	初始固化 Initial Cure	可加工 Can be process	完全乾固 Full Cure

產品 Product	包裝 Packing	顏色 Colour	產品編號 Product Code
犀利牌水中補塑鋼土 Knead-It Underwater	50g	灰白色 Off-White	300311 (131058)

## 犀利牌木料填充劑 Plastic Wood



**可修補所有木製品**  
Suitable for  
all types of woodwork



**快速固化、乾後變硬**  
Fast setting &  
sets to a hard finish



**乾後可鑽孔、上螺絲、  
鋸開、打磨及上漆**  
Dry can be drilled, screwed,  
sawn, sanded & painted



### 產品說明 Description

犀利牌木料填充劑是一種含天然木纖維的快乾溶劑性木料修補填充劑。

Plastic Wood is a fast-setting solvent based interior wood filling cement.

### 用途 Uses

適用於 Ideal for :

- 修補各類木材、木器、木傢俱  
Repairing all types of woodwork
- 填充木材表面上的小孔、裂痕及碎片  
Filling holes, cracks and chips in wooden surfaces

### 適用於 Suitable For

- 木材表面  
Wooden surfaces
- 木製品  
Woodwork

### 技術特性 Technical Features

- 快速固化、乾後變硬  
Fast setting and sets to a hard finish
- 不具彈性  
Not flexible
- 乾後可當真木材般處理，可鑽、釘、染色、刨光或上漆  
Can be treated in all respects as real wood by sanding, nailing, staining, varnishing or painting

### 施工貼士 Application Tips

- 會膨脹、收縮或震動的裂縫或接口處建議使用犀利牌彈性填縫膠  
Use Selley's No More Gaps for filling gaps between surfaces where structural movement occurs
- 只適用於室內使用  
Interior use only
- 每次塗抹深度切勿超過6毫米  
Do not fill more than 6mm in each application

### 技術參數 Technical Details & Performance

性能 Property	典型值 Typical Result
VOC含量 VOC Content	<70g/L

### 固化時間 Cure Time

所需的時間取決於應用環境  
Time for strong cure depends on nature and condition of application

施工 Application	10分鐘 10 minutes	24小時 24 hours
	結皮 Skin Forming	完全乾固 Full Cure

產品 Product	包裝 Packing	顏色 Colour	產品編號 Product Code
犀利牌木料填充劑 Plastic Wood	50g	楓木色 Maple	104922

## 犀利牌萬能抹潔布 (2片裝) Super Cloth (Twin pack)



吸水力比一般  
抹潔布強4倍  
Absorbs 4 times better  
than regular cloth



抗菌配方、一沖即淨  
Antibacterial formula  
& easy rinse and clean



兩色質料相同、  
顏色區分用途  
以免交叉污染  
Different colours to  
differentiate cloth ensure  
no cross-contamination



### 產品說明 Description

犀利牌萬能抹潔布是由獨特的高效能清潔纖維製成，即使頑固污漬，亦可一沖即淨。  
Super Cloth Twin Pack are made from special rinse clean fibres, rinses clean even the worst stains.

### 用途 Uses

- 適用於 Ideal for :
- 潮濕及頑固污積的表面  
Wet and heavily soiled surfaces
  - 檯面及防濺板  
Bench top and splashback
  - 油膩的爐頭及焗爐  
Greasy Stove and oven
  - 燒烤架  
BBQ grill
  - 電爐及家電  
Hotplate and appliance
  - 廚盆、盥洗盆、廚房器具及洗碗盆  
Kitchen sink, tub, furniture and vanity
  - 洗滌碗碟  
Washing dishes
  - 淋浴間及凹槽  
Shower floor and recess
  - 浴室牆面、地板及洗手盤  
Bathroom wall, floor and vanity
  - 浴缸及水療浴缸  
Bath tub and Spa
  - 所有瓷磚表面  
All tiled surfaces

### 適用於 Suitable For

- 木材  
Timber
- 石膏板  
Plasterboard
- 石材  
Masonry
- 瓷磚及陶瓷  
Tiles & Ceramics
- 金屬  
Metals
- 橡膠  
Rubber
- 玻璃  
Glass
- 塑膠  
Most plastics

### 技術特性 Technical Features

- 獨立抹潔布 - 以不同顏色區分用途，以免交叉污染  
Separate cloths - separate cloths ensure no cloth cross-contamination
- 抗菌  
Antibacterial
- 吸水力達抹潔布重量的4倍  
Absorbs 4X own weight
- 一沖即淨  
Easy to rinse and clean

### 施工貼士 Application Tips

- 偶爾用微溫的肥皂水清洗，能使產品更加耐用  
Occasionally launder in warm, soapy water to extend life
- 不適用於高溫的物品  
Not suitable for extremely hot objects
- 擦潔布會稍微縮水，但不影響其清潔效能  
Cloth may initially shrink a bit during use and washing, but it will maintain its rinse and clean properties
- 請勿使用衣物柔順劑或漂白水  
Do not use fabric softener or bleach

產品 Product	包裝 Packing	顏色 Colour	產品編號 Product Code
犀利牌萬能抹潔布(2片裝) Super Cloth (Twin pack)	2片 - 180mm x 230mm 2pcs	粉紅色&黃色 Pink & Yellow	118424(S)

## 犀利牌 RP7 — 隔水防銹潤滑劑 RP7 Multipurpose Lubricant

 <p><b>除銹</b> Remove Rust</p>	 <p><b>防銹</b> Protect against rust and metal corrosion</p>	 <p><b>去除頑固黏合物 (去膠漬)</b> Cleans</p>
 <p><b>驅除濕氣</b> Repels moisture</p>	 <p><b>潤滑</b> Lubricates</p>	 <p><b>停止噪音</b> Stops Annoying squeaks</p>
		 <p><b>去油污</b> Removes grease &amp; oil</p>



### 產品說明 Description

RP7是一種排水，防腐蝕具有潤滑和滲透能力的多功能噴霧劑。  
SELLEYS RP7 is a multi-purpose lubricating and penetrating spray which displaces water and inhibits corrosion.

### 用途 Uses

適用於 Ideal for :

- 家庭、汽車、船舶、農業、工業和建築使用。  
Household, automotive, marine, farm, industrial and building use.
- 它有助於濕的發動機啟動，鬆開生銹的部件、潤滑、減少因摩擦產生噪音和防止生銹。  
It helps to start wet motors, loosens rusted parts, lubricates, stops squeaks and protects against rust.

### 適用於 Suitable For

- 金屬  
Metals
- 機械  
Machinery
- 生銹的零件  
Rusted Pparts

### 技術特性 Technical Features

- 包含可滲透的潤滑油，可消除吱吱聲和鬆解生銹的部件。  
Contains penetrating lubricant oil that stops squeaks and loosens rusted parts.
- 可排除濕氣  
Displaces moisture
- 在腐蝕性的環境中，包括鹽水和許多化學介質，RP7 通過提供一層保護屏障，對金屬提供保護。  
RP7 protects all metals by providing a protective barrier against corrosive environments, including salt water and many chemicals.
- 對橡膠、油漆或大多數塑膠，RP7不會產生負面影響。  
RP7 will not adversely affect rubber, paintwork or most plastics.

## 施工貼士 Application Tips

- 啟動弄濕的電動機 (如車、船、割草機等 電動機) :

To start wet motors (cars, boats, mowers, etc.) :

首先拆下分電器蓋，如果髒了，用抹布未抹乾淨後再噴灑RP7，更換電器蓋，向分電器蓋、火花塞、線圈、發電機、起動電機、引線等等噴灑。RP7能夠排除引起點火短路的水分——幫助維持正確的電氣性能。

Remove distributor cap, wipe with a dry rag if soiled and then spray with RP7. Replace cap and spray around distributor cap, spark plugs, coil, generator, starter motor, leads etc. RP7 draws out moisture which causes ignition short circuits - helps maintain correct electrical performance.
- 滲透和鬆動 :

To penetrate and loosen :

在銹死的連接處、螺母、螺栓等上面噴灑RP7，等待5分鐘讓RP7滲透，也可以輕輕的拍動零部件。若情況比較嚴重，則可以多次重複噴灑。使用RP7可作為一種通用的潤滑油來消除吱吱聲和保持機器的平穩運轉。

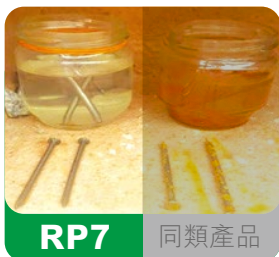
Spray RP7 on seized or stiff joints, nuts, bolts etc. Allow 5 minutes to penetrate and if necessary tap lightly. Repeat application if needed in severe cases. Use RP7 as a general purpose lubricant to eliminate squeaks and keep mechanisms functioning smoothly.
- 避免生銹和腐蝕 :

To protect against rust and corrosion :

定期把RP7噴灑在螺母、鉸鏈、連接處、園藝工具和金屬部件。RP7會滲透進入狹窄的縫隙，排除水分，從而防止生銹。可以用在鋼、鐵、銅、黃銅、鋁、鎂合金上。同時RP7不會損害橡膠和漆面。RP7防護的耐久性會因受保護材料的類型和所暴露的環境而異。

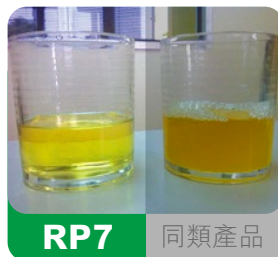
Simply spray RP7 periodically over nuts, hinges, linkages, garden tools or other metal parts. RP7 penetrates into confined spaces to displace moisture and protect against rust. Use on steel, iron, copper, brass, aluminium and magnesium alloys. RP7 will not harm rubber or paintwork. The duration of protection obtained using RP7 will vary depending on the type of material being protected and the conditions of exposure.

## 產品比較 Product Comparison



RP7 同類產品

經過犀利牌 RP7 處理，即使浸水 12 天仍未生銹，RP7 防銹更強。



RP7 同類產品

犀利牌 RP7 清澈無氣泡，不起泡更深入潤滑。



RP7 同類產品

犀利牌 RP7 不溶於水，油分更高效果更持久。

產品 Product	包裝 Packing	顏色 Colour	產品編號 Product Code
犀利牌 RP7 — 隔水防銹潤滑劑 SELLEYS RP7 Multipurpose Lubricant	150g	澄清、蜜褐色的液體 Clear, honey brown liquid	102379-150g
	300g		102713-300g



**如欲查詢更多資料（包括化學品安全技術說明書），  
請到 [www.selleys.com.hk](http://www.selleys.com.hk)**

**For additional information  
(including Material Safety Data Sheets),  
visit [www.selleys.com.hk](http://www.selleys.com.hk)**



**SELLEYS**  
**LIQUID NAILS**  
RAPID CURE  
ULTIMATE STRENGTH  
CURES IN 10 MINS  
WATERPROOF  
EPOXY RESIN

**EPOXY HAND**  
Epoxy Resin  
Epoxy Resin

**SELLEYS**  
**SUPERBOND**  
Epoxy Resin  
Epoxy Resin



**時生有限公司**  
**Neave Limited**

香港新界荃灣楊屋道8號如心廣場第2座32樓3203-4室  
Suites 3203-4, 32/F., Tower 2, Nina Tower,  
No.8 Yeung Uk Rd., Tsuen Wan, N.T., Hong Kong  
電話 Tel: (852) 2699 9333  
傳真 Fax: (852) 2602 8844  
電郵 E-mail: selleys@nipponpaint.com.hk  
網址 Website: www.selleys.com.hk

©犀利牌, SELLEYS and IF IT'S SELLEYS IT WORKS are registered trademark.



犀利牌 Selleyshk | 



犀利牌 Selleyshk | 



犀利牌 Selleyshk | 